

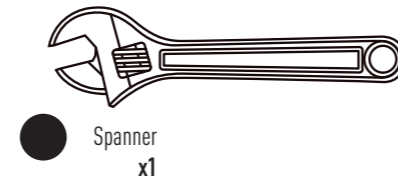
HALF RACK

ASSEMBLY MANUAL

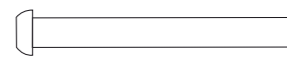


HARDWARE PACK

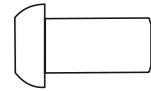
NOT INCLUDED



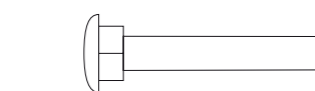
17 M10 x 95mm Bolt
x10



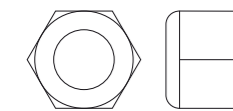
18 M10 x 90mm Bolt
x8



19 M10 x 20mm Bolt
x18



20 M10 x 65mm Carriage Bolt
x4



21 M10 Nylon Locknut
x20



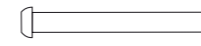
22 M10 Washer
x56



35 Allen Wrench
x1

2

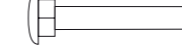
17 M10 x 95mm Bolt x6



19 M10 x 20mm Bolt x12



20 M10 x 65mm Carriage Bolt x4



21 M10 Nylon Locknut x10



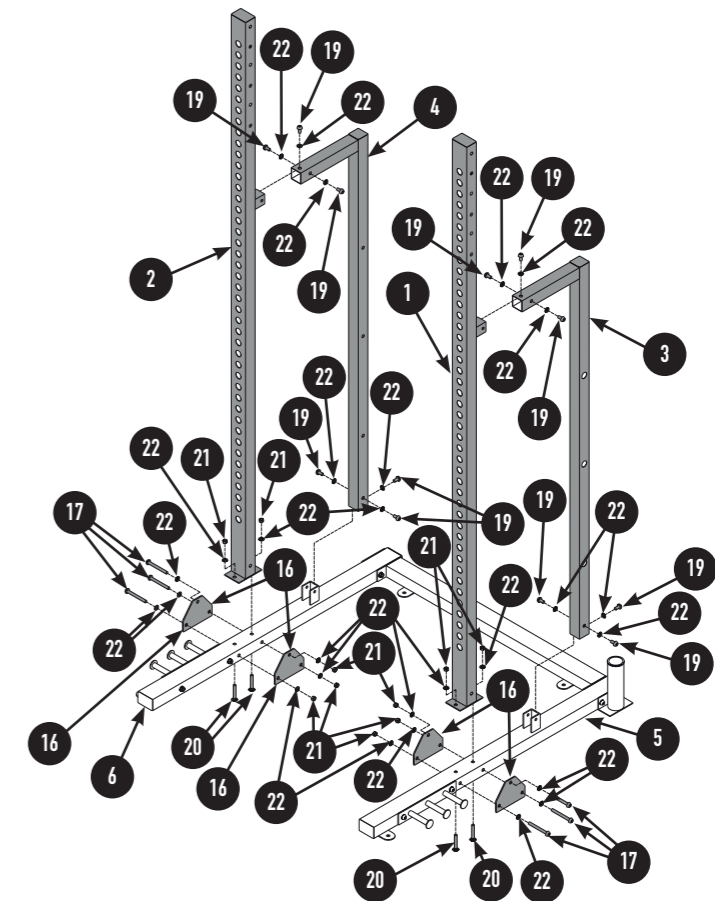
22 M10 Washer x28



35 Allen Wrench x1



Spanner x1

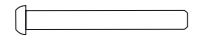


1

17 M10 x 95mm Bolt x4



18 M10 x 90mm Bolt x4



21 M10 Nylon Locknut x6



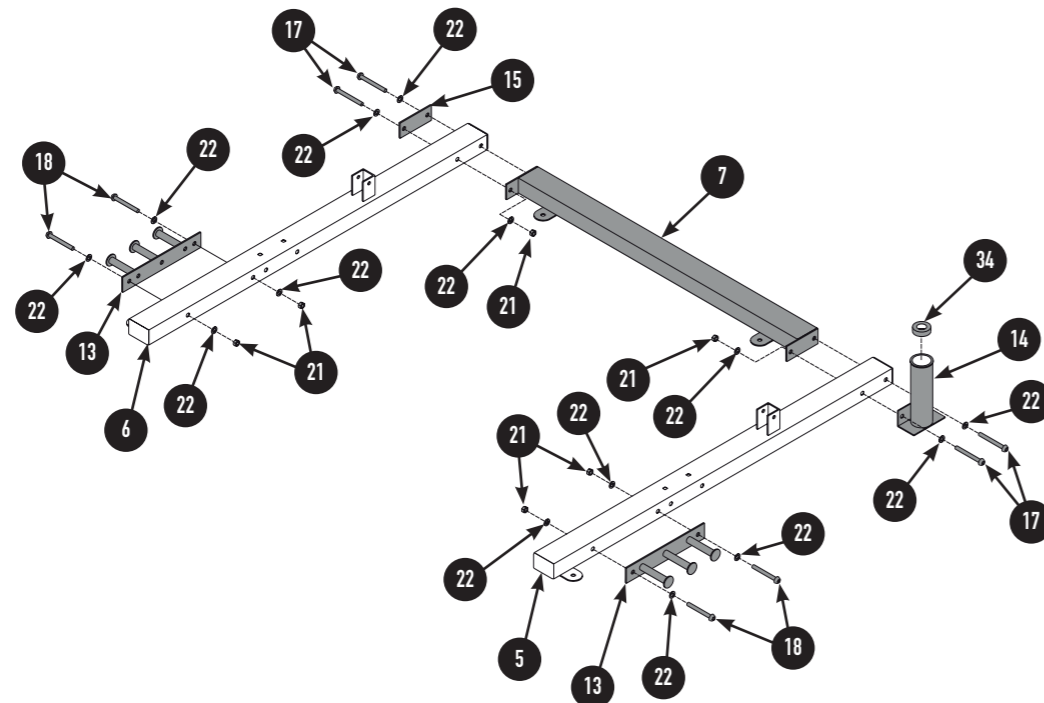
22 M10 Washer x14



35 Allen Wrench x1

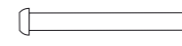


Spanner x1



3

18 M10 x 90mm Bolt x4



19 M10 x 20mm Bolt x6



21 M10 Nylon Locknut x4



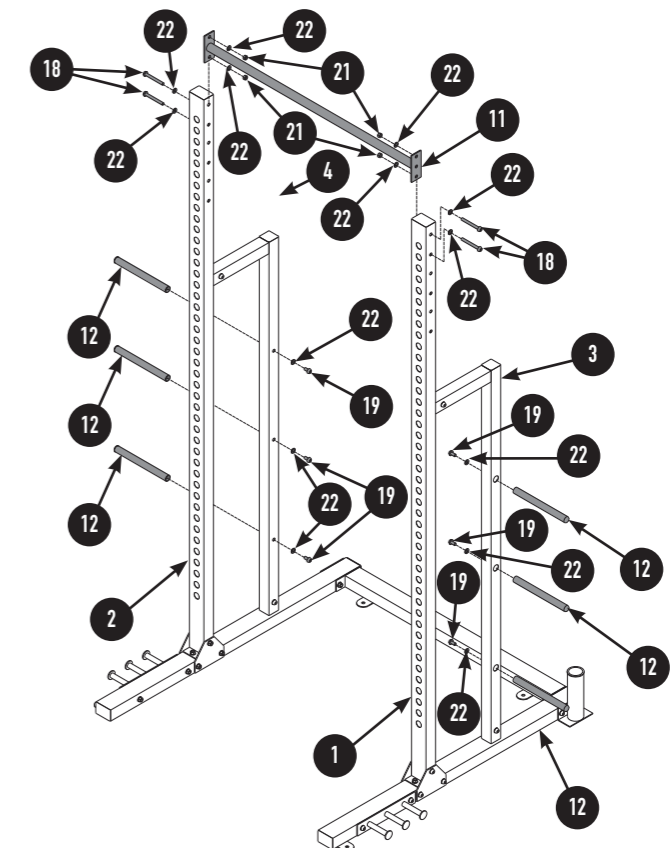
22 M10 Washer x14



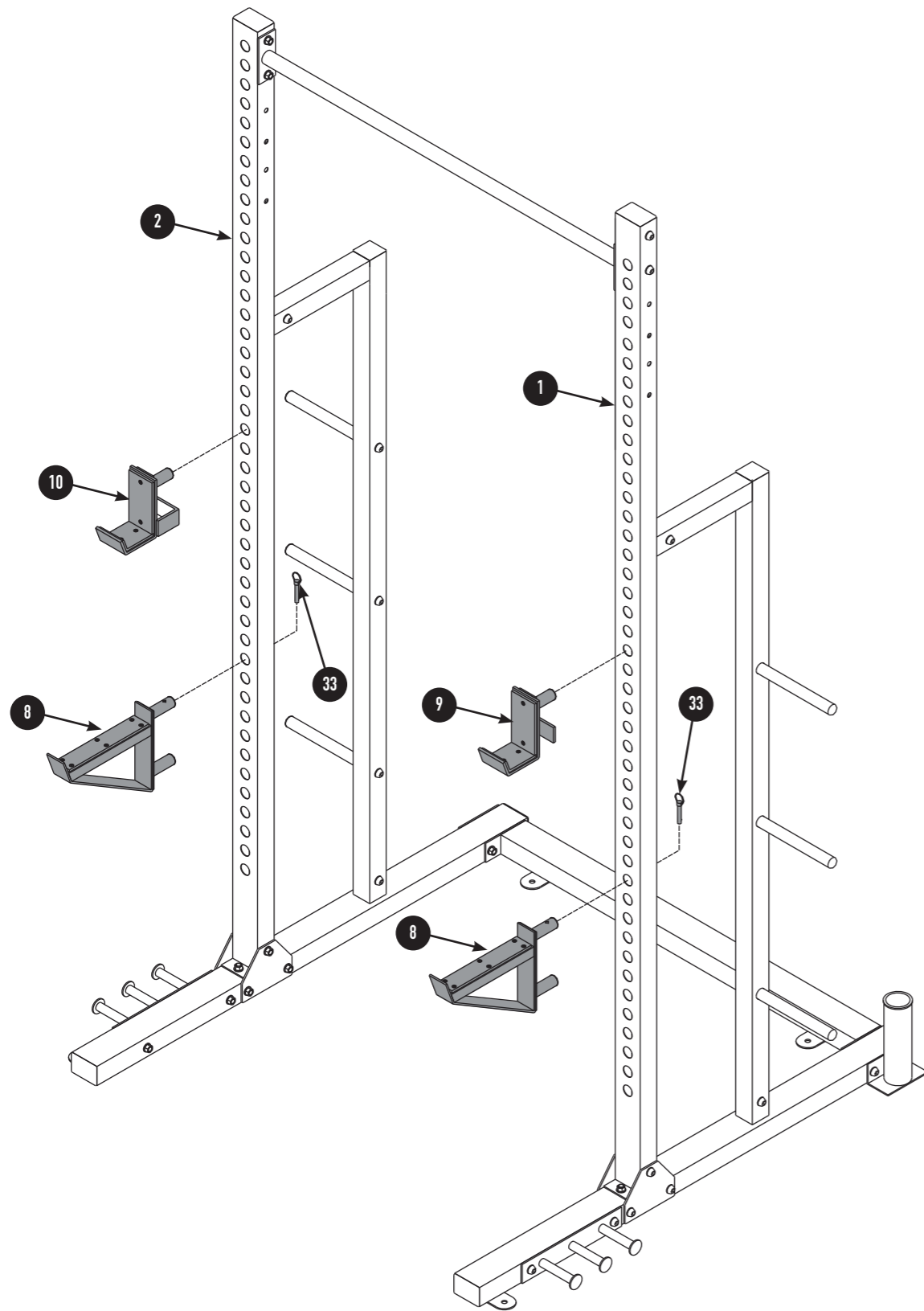
35 Allen Wrench x1



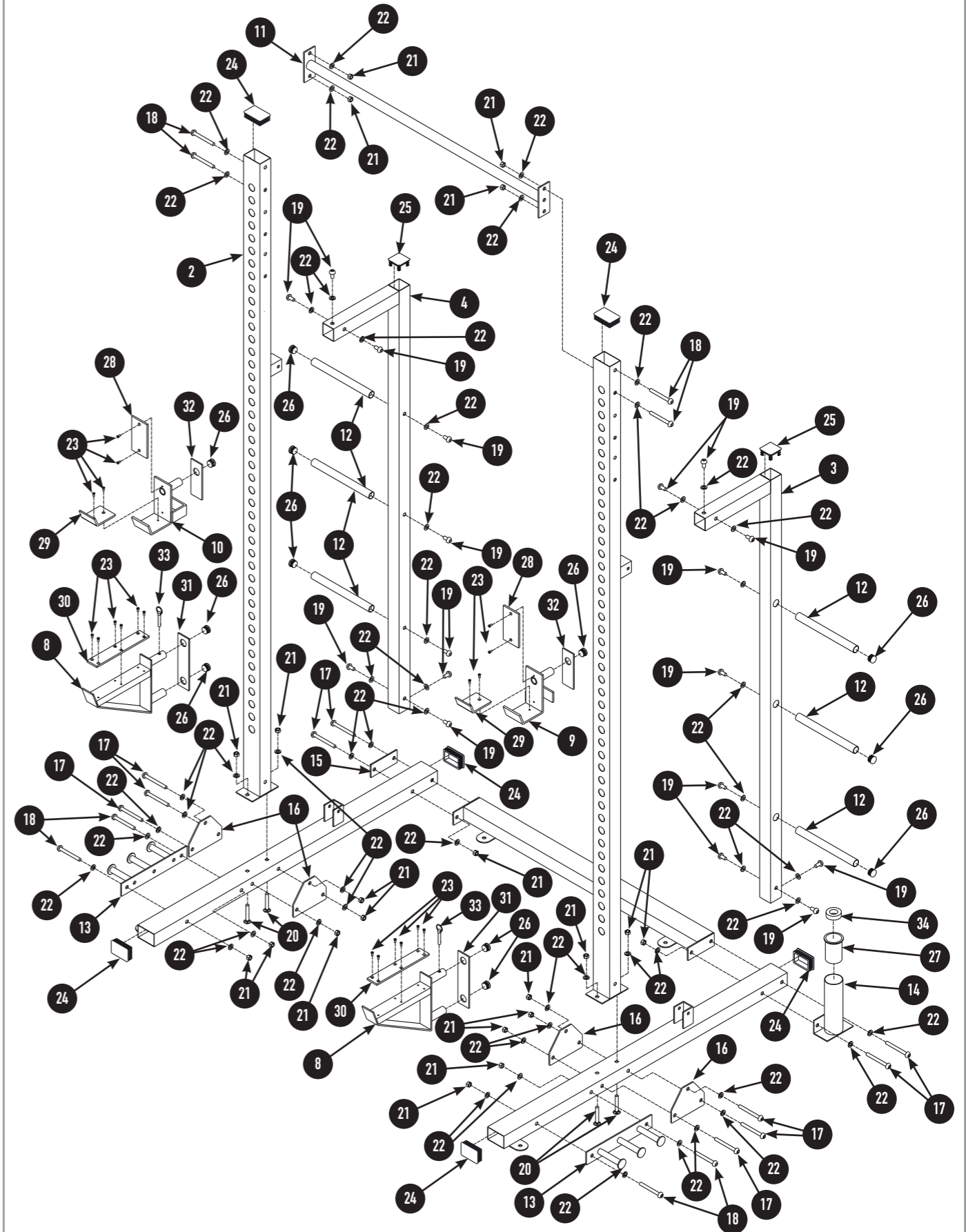
Spanner x1



4



EXPLODED VIEW



PARTS LIST

No.	Part No.	Description	QTY
1	PFMRE605H-01	Left Main Upright	1
2	PFMRE605H-02	Right Main Upright	1
3	PFMRE605H-03	Left Support Bar	1
4	PFMRE605H-04	Right Support Bar	1
5	PFMRE605H-05	Left Bottom Straight Beam	1
6	PFMRE605H-06	Right Bottom Straight Beam	1
7	PFMRE605Q-05	Horizontal Beam	1
8	PFMRE605H-07	Long Safety Device	2
9	PFMRE605Q-06	Left Short Safety Device	1
10	PFMRE605Q-07	Right Short Safety Device	1
11	PFMRE605H-08	Upside Horizontal Beam	1
12	PFMRE605H-09	1" Olympic Sleeve	6
13	PFMRE605H-10	Rope Rack	2
14	PFMRE605H-11	Barbell Rod Bushing	1
15	PFMRE605Q-09	Support Plate	1
16	PFMRE605Q-10	Polygonal Support Plate	4
17	PFM3008-17	M10 x 95mm Bolt	10
18	PFM6105-27	M19 x 90mm Bolt	8
19	PRK3B-03	M10 x 20mm Bolt	18
20	PFMH1007A-28	M10 x 65mm Carriage Bolt	4
21	PRK1-05	M10 Nylon Locknut	20
22	PRK1-06	M10 Washer	56

PARTS LIST

No.	Part No.	Description	QTY
23	PFMRE72RK-11	M5 x 10mm Screw	20
24	PFMCB8000F-12	70 x 50mm Square Inner Cap	6
25	PRK3-05	50 x 50mm Square Inner Cap	2
26	PRK1-03	25mm Round Inner Cap	12
27	PFMCB8008-29	60 x 50mm Round Plastic Bushing	1
28	PFMRE725-18	134mm Rubber Strip	2
29	PFMRE725-19	120mm Rubber Strip	2
30	PFMAD615-27	240mm Rubber Strip	2
31	PFMRE605H-12	207mm Rubber Strip	2
32	PFMRE605Q-11	140mm Rubber Strip	2
33	PFMRE605H-13	Lock Pin	1
34	PFM3008-15	50 x 26mm Rubber Bumper	1
35	PFMALLEN	Allen Wrench 6 x 6mm	1

USER INFORMATION

This product is suitable for user's weight of **100kg**.



150 kg

This product is suitable for a max load of **150kg**.



150 kg



Product Registration and Support
 Enregistrement et support du produit
 Productregistratie en ondersteuning
 Registro de productos y soporte
 Registro de produto e suporte
 Регистрация и поддержка продукта
 製品の登録とサポート

مع دلاله و جت نم لاي ج سرت

产品注册和技术支持
 제품 등록 및 지원



www.reebokfitness.info/product-support



For product information or service please contact:

UK: RFE Europa Ltd. 8 Clarendon Drive, Wymbush, Milton Keynes, MK8 8ED.

Customer Service: Tel: +44 (0)800 440 2459 Email: techsupport@rfeinternational.com

Europe: serviceeuropa@rfeinternational.com

Spain: serviciotecnico@rfeinternational.com

APAC (excluding Australia): RFE Asia Pacific, 2608-1609, 1 Hung To Road, Kwun Tong, Kowloon,
Hong Kong.

Customer Service: Tel: +852 34685027 Email: techsupportapac@rfeinternational.com

Australia: techsupportaustralia@rfeinternational.com

USA: RFE Sporting Goods Inc., 1300 Smith Road, STE 104, Austin, Texas, 78721, USA.

Customer Service: Tel: +1 (800) 215 6216 Email: techsupportusa@rfeinternational.com